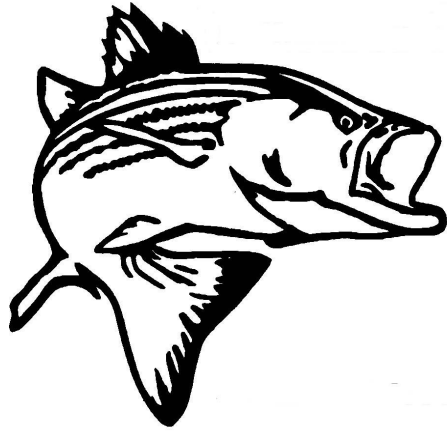


**Catch
the
Striper
Fever!**

T.S.B.A.



***Tennessee
Striped Bass
Association,
Inc.
Newsletter***

**February
2013**



***Member Gary Harris submitted this photo of a fine catch he
made this past month.***

Letter from the Prez

I hope everyone is staying warm this winter. The weather in East TN has been wild this last month, to say the least. We have had days in the high 60's as well as the normal cold, rainy, snowy days in January. We've had snowstorms with thunder and rains that have raised our lakes and river many feet. All this flow has made fishing a challenge on most days, but our members who are getting out did have some good days of catching.

With the cold days keeping a lot of us off the lakes, indoor club activities have been moving forward. Our TSBA Committee projects made some progress this month, with a new logo design completed and approved. The cover of the April newsletter will display the new graphics and club slogan. We will also be creating new business cards, stickers and hats with this new look.

Another committee has been busy creating a fresh look for our website. Their goal was to give our site an updated, more appealing look. We are hoping to attract new members as well as give our current members an easier navigation to information and links to other sites, such as our Fishing Forum. Another goal will be to increase member use of the Fishing Forum. Some in the past have had problems with the automated sign-up or with logging on. We hope a lot of those issues have been resolved and additional log-on support will assist those with issues.

The Forum is a great place to safely share fishing reports and an excellent answer source for fishing, bait, and tackle questions. Please visit our new web site at:

www.tnstripedbass.com

The more visits made to a website, the higher the site ranks in searches, so we need your support to get this new web address positioned among the top pages displayed in an internet search.

The best way to sign-up for the Forum is through the website, but if you are already registered, this link will get you there:

<http://tsba.freeforums.org/>

If you check, 'log me on automatically each visit', and then bookmark the site once logged on, most computers will give you 1-click access.

The cold days are also a good time to work on your fishing gear and boats. But if you want to catch a fish, you've got to 'Go Fishing'!

— Doug Steffe, President

Fishing Regulations

New fishing licenses are required to fish starting annually each March 1st. It is each fisherman's responsibility to know the rules and stay legal. **LOOK FOR THE NEW REGULATIONS ON UNBRELLA RIGS.** Changes are normal in the management of our fishery each year, and those changes become effective on March 1st. Each body of water may have exceptions you need to be aware of before exposing yourself to a fine.

There are some seasonal striped bass CREEL AND SIZE limit changes that take place April 1st and November 1st. Go on line to Tennessee Wildlife Resources Agency at www.tnwildlife.org or pick up a copy of the 2013 Fishing Regulations at sporting stores or TWRA offices. Wearing life preservers are required below the dams and a good habit anytime on the water for personal safety.

— Ezell Cox

January Meeting Minutes

TSBA's monthly meeting was held at Bass Pro Shops in Sevierville on January 21, 2013. Approximately 55 members attended the meeting. President Doug Steffe opened the meeting by introducing new members and then gave the floor to the chairmen of the website, logo, and financial committees.

Bud White, Chairman of the Website Committee, commented that he had been searching for a new website designer but had not found anyone willing to take on the task. Cory Malabey, Chairman of the Finance Committee, indicated that donating equipment to Eagle Bend Fish Hatchery is preferable to making a monetary donation to TWRA, as all monetary donations go into a general fund. Bill Ballou, Chairman of the Logo Committee, introduced a possible new TSBA logo for use on business cards, stickers, and the website.

The featured speaker this month was Ezell Cox, Club Advisor. Ezell discussed the merits of side scan sonar and how to tune sonar units for the best results. For more information on the content of the presentation, please see the handout Ezell graciously provided or the feature article in this month's newsletter.

— Keith Shannon, Secretary

February Meeting

Please join us on February 18, 2013 for the TSBA monthly meeting. Our meeting location is:

**Bass Pro Shops (Kodak/Sevierville)
3629 Outdoor Sportsmans Place,
Kodak, TN**

Bass Pro Shops is located at Exit 407 on Interstate 40. We will have dinner at 6 p.m. in the restaurant located inside the store.

Reminders

Be sure to visit our website at www.tnstripedbass.com

To view the January meeting on You Tube: [Click Here](#)

Annual **membership renewals are due** in January. See page 15 for the simplified renewal process for returning members. Please contact Bud White if you have paid dues for 2013 and your membership status is shown as “expired” in error.

The newsletter publication schedule has changed! TSBA will issue eight newsletters annually. **The next newsletter will be published in April, 2013.**

Winter Fishing Expectations

A great way to find the right places to look for fish is from past history. Look at the last few years of information available on fishing websites, articles, pictures, and magazines. Many times the best clue is to find the largest baitfish concentrations that will seek out the warmest, most stable temperatures.

March is the beginning of transition from winter patterns to the pre-spawn migrations. Striped bass will be migrating into the shallow, relatively warmer, incoming rivers and feeder creeks. The surface action can be great and the gulls are still very much worth following. The pre-spawn gorging can add as much as 20% of the weight to the hybrid /striped bass post-spawn. They will be found early in the month roaming the deep, open water in large schools as they feed on small threadfin shad that are dying and struggling to survive.

With the longer days of sunshine, water temperatures are expected to climb from 45°F to the high 50's in some areas by the end of the month. Find the gulls to be in the feeding zone with breaking fish on the surface being likely.

— **Ezell Cox**

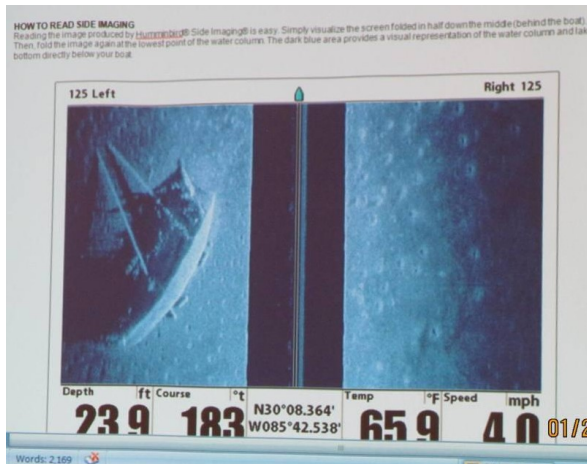
SIDE IMAGE SONAR

I find it helpful to compare SONAR to a FLASH-LIGHT, so we can relate to seeing what the sound signal does. The standard sonar that we would use has a range of 50 to 200 KHz. The 50 KHz would be like an extreme broad circle of light that would not allow good visual definition. The 200 KHz is more like a modified spotlight that gets better penetration and much better definition with a much smaller circle of coverage area.



Club Advisor Ezell Cox gave a very informative presentation on side image sonar at the January club meeting. His lecture notes are included here for your reference.

In our flashlight analogy, the SIDE / DOWN IMAGE would be more like a LAZER LIGHT that you could sweep across the area, seeing the target only when the beam hits it. When the laser beam hits a target between the boat and the bottom structure beyond, it can show a shadow on the bottom. Any structure like rocks, trees, stumps, fish, bait balls, underwater ridges or the like will show a dark colored shadow beyond where a laser light could not shine beyond. If your SIDE IMAGE shows a much brighter image on one side, then that side is shallower than the other dark-image deeper side. Although structure is shown very well, most of us want to see fish and bait, and fine tuning can be done to enhance your fishing. One Humminbird® option for fine tuning is to select X-Press Menu, SI ENHANCE, and then the CURSOR KEY. The screen will stay there and you can adjust to the best setting before exiting.



During his presentation, Ezell provided a variety of visual aids to help shed some light on side image sonar. Manufacturer websites such as Lowrance and Humminbird are great places to reference for tutorials on how to use this type of equipment.

transducer to the sides in a narrow beam or slice.

Unlike traditional SONAR that starts on the right side as current then becomes history as it moves to the left side of the screen, SIDE IMAGE starts at top of screen as current and becomes history as it moves to the bottom of the screen. If the transducer is on the transom of the boat, the traditional SONAR will always show the targets first because of the wide 360-degree cone-shaped broadcast of (light) sonar signal. The SIDE IMAGE signal sweep goes straight away from the

Screen size does make a difference. Bigger is better because of being able to see details. Details show up better also by not looking at as many feet, so if all you are interested in is on the right side of the boat, then use the full screen to look right. Shorter side image range is also good practice for detail. Color or background can also enhance your image on screen. Try to not become brand loyal unless you are being compensated for it because the two brands I am familiar with will give you the same good information to catch fish. Keep your software updated and select the correct Chart/Navigation you will use on your fishfinder. Don't be afraid to PUSH BUTTONS because it will make you better at understanding and getting the best out of your fishfinder. Go ahead and use the factory default to get back to the original settings if you need to start over, but PUSH BUTTONS.

This information may be more for the Humminbird brand since that is what I'm more familiar with. The settings I use on my unit are par-

enthesized following each function but don't let that stop you from pushing buttons because I still do. The first key to push would be the Power/Light/background. The black background works great in the dark because the light will shock your eyes before you can adjust it. I suggest using the ADVANCED USER MODE although the AUTO on most functions works well. The next step would be to go through all the settings on the X-Press menu and then the 2nd click for the main menu. The setting needing adjusted is SI Side, Sensitivity (12), Contrast (14), Sharp (off), Contour (mostly off), Range (120), Chart Speed (3 to 5), SI Colors (amber2), Beam Select (Hi-def Sidescan), Frequency (455 KHz), Surface Clutter (2), Switch fire (mostly max), Fish ID (off), RTS Window (off), Bottom View (white structure), Zoom Width (wide), Depth Lines (on), Noise Filter (off to Med), Max Depth (150), Fresh Water, Color Bar (off), Temperature Graph (off), and Beam Width (wide).

CHART & NAVIGATION is easy if you just plug in the cards and the unit will go to it. There are some great settings that will allow you to leave a trail, mark waypoints, and adjust color to contour lines for definition of danger while running. A simple SD card plugged in will also allow you to capture screen SNAPSHOTS with just a touch of the MARK KEY. The GO TO KEY allows the selection of waypoints that have been marked then just follow the line or boat indicator to the waypoint.

SET UP will allow you to select the readouts you want to keep displayed like DEPTH, TEMPERATURE, SPEED, LOCATION, TIME, DATE, and VOLTAGE. Another SET UP should be the VIEWS. Go through all the views and HIDE all those that you plan to never use then select the 3 that you will use the most to the PRESET KEYS. Then you can use the VIEW OR EXIT key to quickly find any that is not PRESET.

The ACCESESSORY KEY allows you to turn on or off the SCREEN SNAPSHOT with installed SD memory card.

Other KEYS include POWER/LIGHT/BACKGROUND, ZOOM + or -, CURSOR 4-WAY, VIEW-EXIT, INFO KEY, MARK KEY, MENU KEY EXPRESS then 2nd click for MAIN MENU, and EXIT.



Bo Boshiers, above and below left, and Doug Steffe pictured with the results of their winter-time fishing efforts. Both anglers practice CPR: these fish were released after photos were taken.





Kens Natural Taxidermy

LaFollette, TN
423-566-5934



kensnaturaltaxidermy.com

A-Plus Construction, LLC

Commercial/Residential Contractors

David Powell

407 Forest Park Blvd
Knoxville, TN 37919
P.O. Box 11106
Knoxville, TN 37939

Office: 865-633-5533
Cell: 865-643-3283
Fax: 865-588-9330
Email: david@a-plusconstruction.net

Madisonville Marine, Inc.



Joseph Speciale

Website: www.madmarine.com
E-Mail: madmarine@tellico.net

Phone: (423) 442-9344
3305 Highway 411 North
Madisonville, TN 37354



Brad Lenderman

865.269.4095
Brad@sunnymarinesales.com
www.sunnymarinesales.com
828 Clinton Hwy
CLINTON, TENNESSEE

Hot Spots

CHEROKEE LAKE

Anglers that have practiced catch-and-release in past years will allow some 36-inch plus striped bass to be caught pre-spawn this spring. The downstream end of the lake will have good fishing from Point 19 to the dam. Look for surface breaks and feeding gulls, large schools can be found at times in very shallow water. Live bait should be easy to catch in most of the warm coves. Casting and trolling with artificial lures may still be the most effective method. John Sevier steam plant may be off-line. If this happens the early season bite may not develop there, as the plant would not be discharging warm water into the lake.

NORRIS LAKE

SIZE (36 INCH) AND CREEL LIMIT (ONE) in effect on NORRIS REGULATIONS November 1ST until April 1st. Find the large schools of baitfish by locating gulls, whether feeding or not, and looking for surface feeding fish. Water temperature will go from the mid 40's to the high 50's in some locations, so consider looking for the bait in the warmest water you can find. The brown algae bloom begins as the temperature warms into the 50's and baitfish are attracted to it to feed and the striped bass follow. The best fishing as the migration begins will be found mid-lake in the major creek feeds and from Hickory Star on the Clinch River and Springs Dock on the Powell River and upstream. Artificial lures are very effective but with some warmer water to be found on sunny days, live bait could also be pulled along the shallow, sun-warmed banks with planner boards.

WATTS BAR & MELTON HILL

SIZE (36 INCH) AND CREEL LIMIT (ONE) in effect on Watts Bar REGULATIONS November 1ST until April 1st. Look for the bait and fish in front of the major coves or where you find the most baitfish on the stained, sun warmed banks. The Kingston Steam Plant often has large concentrations of baitfish especially if the warm water discharge influences the area's water temperature. The steam plants have not produced the warm water discharge like in past years, so the fishing has suffered around them. The fish in Watts Bar and lower Clinch have contamination warnings and should not be harvested.

— **Ezell Cox**

YOUR 2013 TSBA OFFICERS, DIRECTORS, AND STAFF

President:

Doug Steffe 865-335-3815
dougsteffe@centurytel.net

Vice President:

Cory Malabey 865-659-3947
clmalabey@charter.net

Treasurer:

Bud White
423-754-0541

Secretary:

Keith Shannon
keith.shannon@gmail.com

Assistant Treasurers:

Allan Franklin
865-805-3120

TSBA DIRECTORS

Todd Asher, Bill Ballou, Jim Blazier, Eddie Dills, Ron Gabler, Cory Malabey, Larry Nowell, Eric Rauch, Bud White, Doug Steffe

TSBA STAFF

Newsletter Printing

& Distribution: Jim Blazier, Bill Ballou, and Eddie Dills

Newsletter Editor:

Sherry Wehner
(swehner9@gmail.com)

Membership:

Bud White 423-754-0541
(tn1fishin fool@yahoo.com)

Web Site:

Terry Reinitz and Bud White

Adv. Sponsor Coord.

Gary Reinitz 856-278-1046

Tournament

Todd Asher 865-789-1991

Coordinators:

Bud White 423-754-0541

Co-op Supplies and

Raffle Prizes:

Steve Nichols
kidchevy@comcast.net

Advisors:

Ezell Cox 423-626-9547
Allan Franklin 865-694-8888

2013 TSBA Calendar

Please join us at TSBA meetings and events. Monthly meetings are held the third Monday of the month at the ***Bass Pro Shops (Kodak/Sevierville), 3629 Outdoor Sportsmans Place, Kodak, TN.***

- | | |
|--------|---|
| Feb 18 | Monthly Meeting: dinner 6:00 p.m., meeting 7:00 p.m.
Speaker: Todd Asher
Topic: Skipjack Catching and Keeping |
| Mar 18 | Monthly Meeting: dinner 6:00 p.m., meeting 7:00 p.m.
Speaker: TBA
Topic: Trolling for Striper |
| Apr 15 | Monthly Meeting: dinner 6:00 p.m., meeting 7:00 p.m.
Speaker: Keith Shannon
Topic: Catching and Keeping Bait |
| May 20 | Monthly Meeting: dinner 6:00 p.m., meeting 7:00 p.m.
Speaker: Mike Smith
Topic: Eagle Bend Fish Hatchery |
| Jun 17 | Monthly Meeting: dinner 6:00 pm., meeting 7:00 p.m.
Speaker: Alan Colette
Topic: Artificial Baits |
| Jul 15 | Monthly Meeting: dinner 6:00 p.m., meeting 7:00 p.m.
Speaker: Mike Smith
Topic: TWRA Striper Stocking Summary |
| Aug 19 | Monthly Meeting: dinner 6:00 p.m., meeting 7:00 p.m.
Speaker: Jim Farmer
Topic: CastAway Tackle |

FABRIC
Commercial Awnings
Residential Awnings
Retractable
Boat Enclosures
Party Tent Rentals

ALUMINUM
Awnings
Canopies
Gemini Letters

MIKE ALLEN
Owner



MOUNTAIN
AWNING & FENCE, LLC
Toll Free: 1-866-746-3686

Free Estimates

For All Your Paving Needs

B&C Asphalt Paving Co., Inc.

Wayne Beeler
Vice-President

Plant 423-626-1234

Residence 423-626-7951
Mobile 526-7161

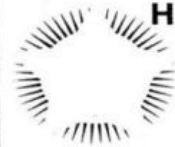
LIVEWELL SYSTEMS, INC.

Custom Bait Tanks

Ron Vest
Owner

W: (864) 295-4206
H: (864) 269-2212

614 Old Pendleton Rd. • Easley, SC 29642
Makers of Super Bait Tanks II



Hickory Star

Marina
"Home of the Stripers"
865-992-5241

**Full service marina
on Norris Lake
Near Maynardville TN**

B&B
STRAIGHT CREEK
BOAT DOCK



**Full Service Dock
on Norris Lake
New Tazewell, TN**

423-626-5826

Maynard & Delbert Brooks



102 Cross Park Drive
(Located on HWY 61, across from Anderson Co. High School.)
Clinton, TN 37716
Hours: Mon-Sat 8 am - 8 pm, Sun 9 am - 7 pm
Pick-Up Trucks Welcomed

**German Creek Boat Dock
On Cherokee Lake
In Bean Station, Tennessee**

The Shad-Man
SHAD AVAILABLE
YEAR ROUND
ONLY \$3.00 PER
DOZEN
CALL 865-767-3350



TSBA 2013 MEMBERSHIP APPLICATION

As a member:

- *You'll receive a monthly newsletter.
- * You'll help support Striped Bass Fisheries & Wildlife Agencies.
- * You'll be informed of new regulations & information that affect striper fishing.
- * You'll develop a network of "striper friends."
- * You'll learn new methods to improve your striped bass fishing effectiveness.
- * You'll be able to call officers for fishing reports.
- * You'll be able to attend monthly meetings with informative programs.
- * You'll have access to all areas of the TSBA web page.

Your Name _____

Spouse's Name _____

Address _____

City _____ State _____ Zip _____

Phone(_____) _____ # of minor children in family _____

Referred By: _____

Please provide an e-mail address to receive the monthly newsletter:

E-Mail address _____

I have read and agree to abide by and be bound by the Tennessee Striped Bass Association, Inc. (TSBA) Bylaws. A copy of the Bylaws can be found on the TSBA website at www.TNStripedBass.com or at the offices of the corporation.

(Signature)

(Date)

Enclose a check for \$20.00

Mail to: Tennessee Striped Bass Association, Inc

P.O. Box 163

Sharps Chapel, TN. 37866

Simplified Renewal Note: Returning members with no changes to their contact information are not required to fill out the application. Just send a \$20 check to the address above. Be sure to include the member's name on the check. When you send in your check, please provide TSBA with an email address where we can send your monthly newsletter. Yearly dues are due in January each year. New members that sign up in Oct., Nov., or Dec. will get credit for the remainder of that year and the following year.



The TSBA is a non-profit corporation that supports TWRA & its Striped Bass & Cherokee Bass programs. We come together to provide a unified voice for the Striped Bass & the Cherokee Bass programs in the State of Tennessee. We educate the public & share our knowledge with fellow Striped Bass anglers.

**Tennessee Striped Bass Association, Inc.
P.O. Box 163
Sharps Chapel, TN 37866**



February 18, 2013: Monthly Meeting

**Dinner at 6:00 p.m.
Meeting starts at 7:00 p.m.**